





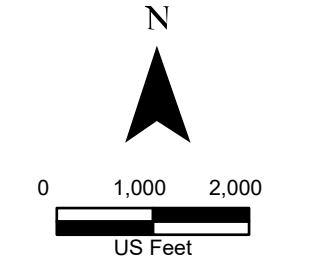


-  Hidalgo fine sandy loam, 0 to 1 percent slopes
-  Hidalgo fine sandy loam, 1 to 3 percent slopes
-  Hidalgo sandy clay loam, 0 to 1 percent slopes
-  Racombes sandy clay loam, 0 to 1 percent slopes

**Legend:**

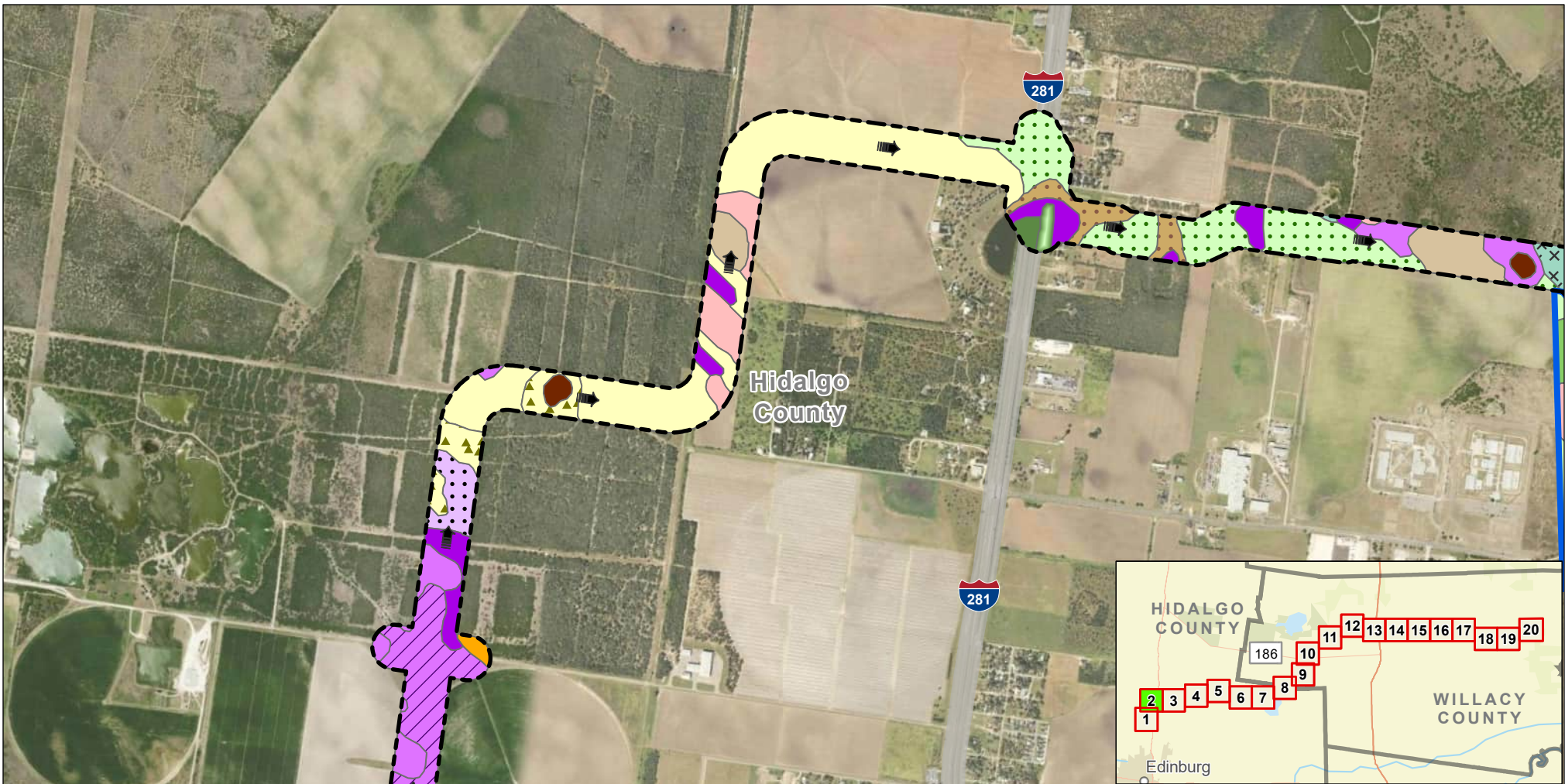
-  Study Corridor
-  Drain Flow



## Exhibit 10 Alternative 2 Soils Map Sheet 1 of 20 Raymondville Drain Project

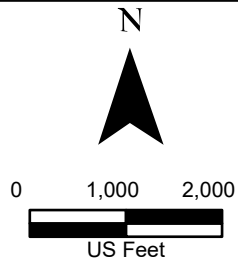
Author : Joel F. Aguirre      Updated : 10/13/2023

DISCLAIMER: RRP Consulting Engineers makes no guarantees as to the accuracy of data used in the construction of this map.



- |  |  |  |   |  |
|--|--|--|---|--|
| Brennan fine sandy loam, 0 to 1 percent slopes | Delfina fine sandy loam, warm, 0 to 2 percent slopes | Hebronville sandy loam, 1 to 3 percent slopes  | Hidalgo sandy clay loam, 0 to 1 percent slopes  | Rio clay loam, ponded                                    |
| Brennan fine sandy loam, 0 to 3 percent slopes | Hargill fine sandy loam, 0 to 1 percent slopes       | Hidalgo fine sandy loam, 0 to 1 percent slopes | Nueces fine sand, 0 to 3 percent slopes         | Tiocano clay, 0 to 1 percent slopes, occasionally ponded |
| Comitas loamy fine sand, 0 to 3 percent slopes | Hebronville sandy loam, 0 to 1 percent slopes        | Hidalgo fine sandy loam, 1 to 3 percent slopes | Pits, borrow                                    | Willacy fine sandy loam, 0 to 1 percent slopes           |
|  |  |  | Racombes sandy clay loam, 0 to 1 percent slopes | Willacy fine sandy loam, 1 to 3 percent slopes           |

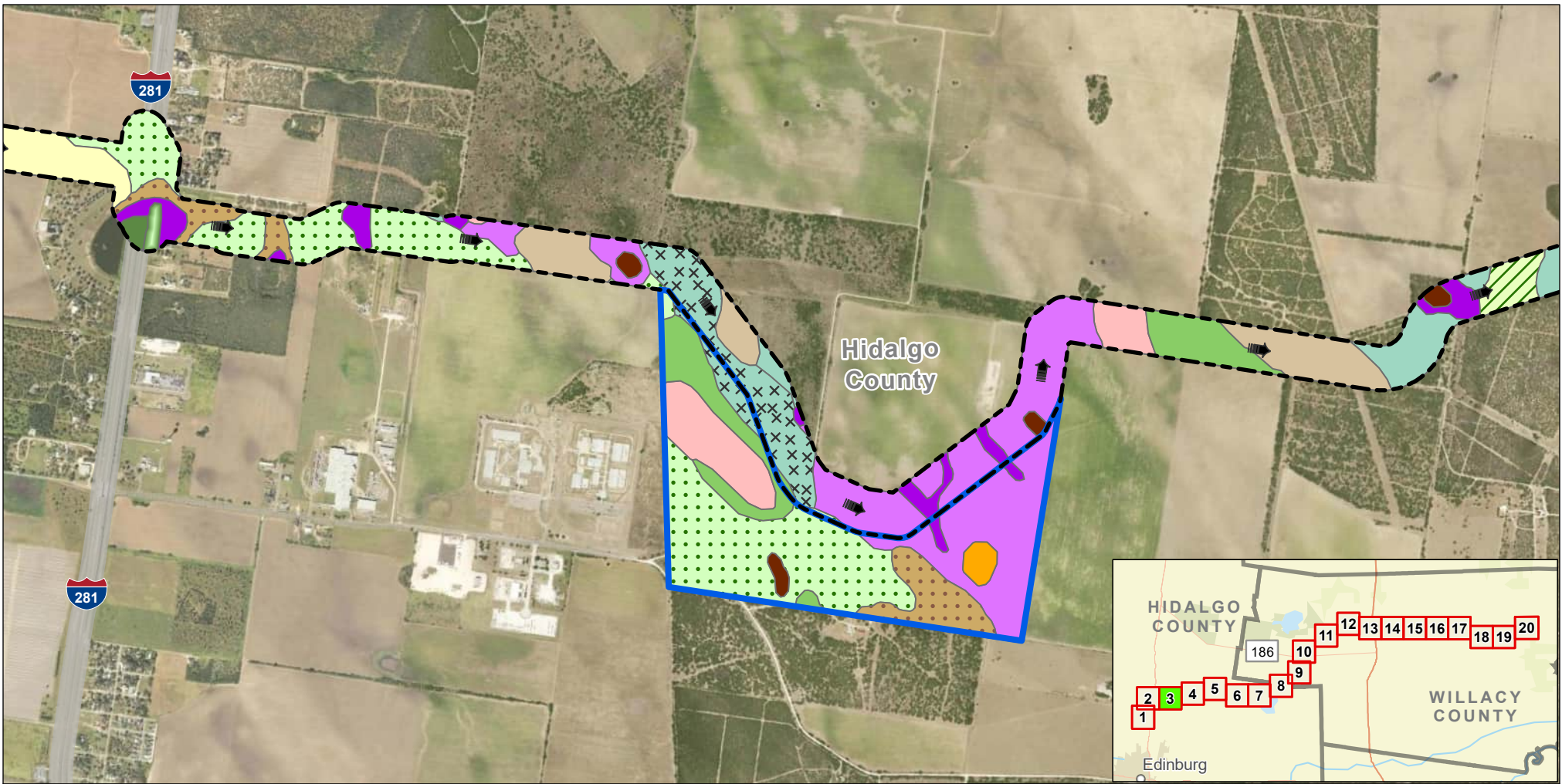
- Legend:**
- Study Corridor
  - Drain Flow
  - Proposed Detention Basin



## Exhibit 10 Alternative 2 Soils Map Sheet 2 of 20 Raymondville Drain Project

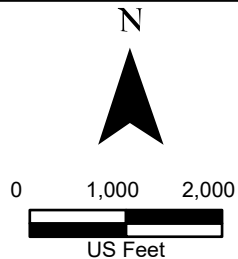
Author : Joel F. Aguirre      Updated : 10/13/2023

DISCLAIMER: RRP Consulting Engineers makes no guarantees as to the accuracy of data used in the construction of this map.



- |  |  |  |   |  |
|--|--|--|---|--|
| Brennan fine sandy loam, 0 to 1 percent slopes       | Hargill fine sandy loam, 0 to 1 percent slopes | Hebbronville sandy loam, 1 to 3 percent slopes | Pits, borrow                                    | Tiocano clay, 0 to 1 percent slopes, occasionally ponded |
| Comitas loamy fine sand, 0 to 3 percent slopes       | Hargill fine sandy loam, 1 to 3 percent slopes | Hidalgo fine sandy loam, 0 to 1 percent slopes | Racombes sandy clay loam, 0 to 1 percent slopes | Willacy fine sandy loam, 0 to 1 percent slopes           |
| Delfina fine sandy loam, warm, 0 to 2 percent slopes | Hebbronville sandy loam, 0 to 1 percent slopes | Hidalgo fine sandy loam, 1 to 3 percent slopes | Rio clay loam, ponded                           | Willacy fine sandy loam, 1 to 3 percent slopes           |

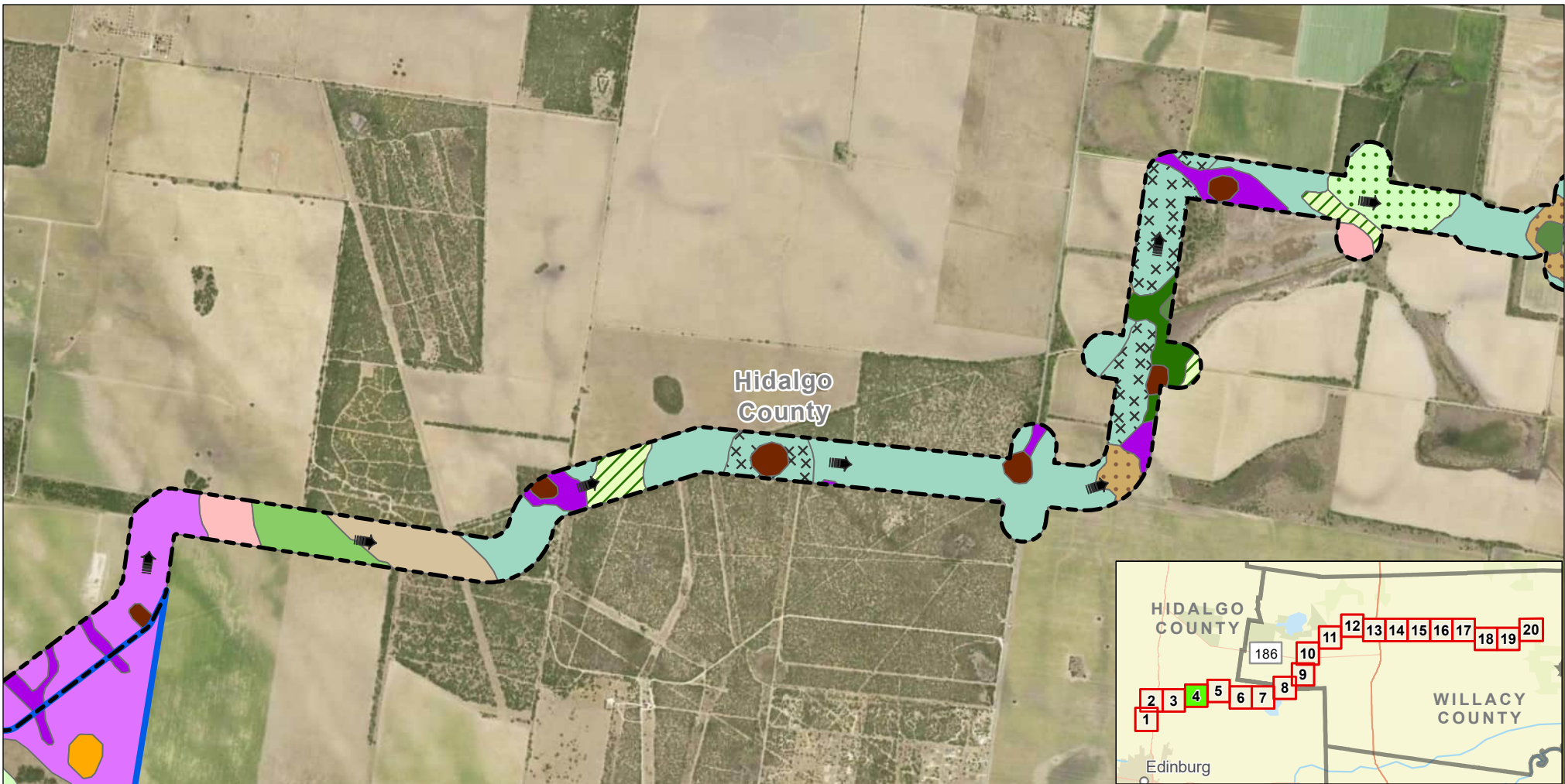
- Legend:**
- Study Corridor
  - Drain Flow
  - Proposed Detention Basin



## Exhibit 10 Alternative 2 Soils Map Sheet 3 of 20 Raymondville Drain Project

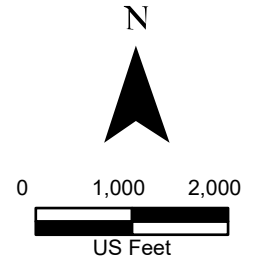
Author : Joel F. Aguirre      Updated : 10/17/2023

DISCLAIMER: RRP Consulting Engineers makes no guarantees as to the accuracy of data used in the construction of this map.



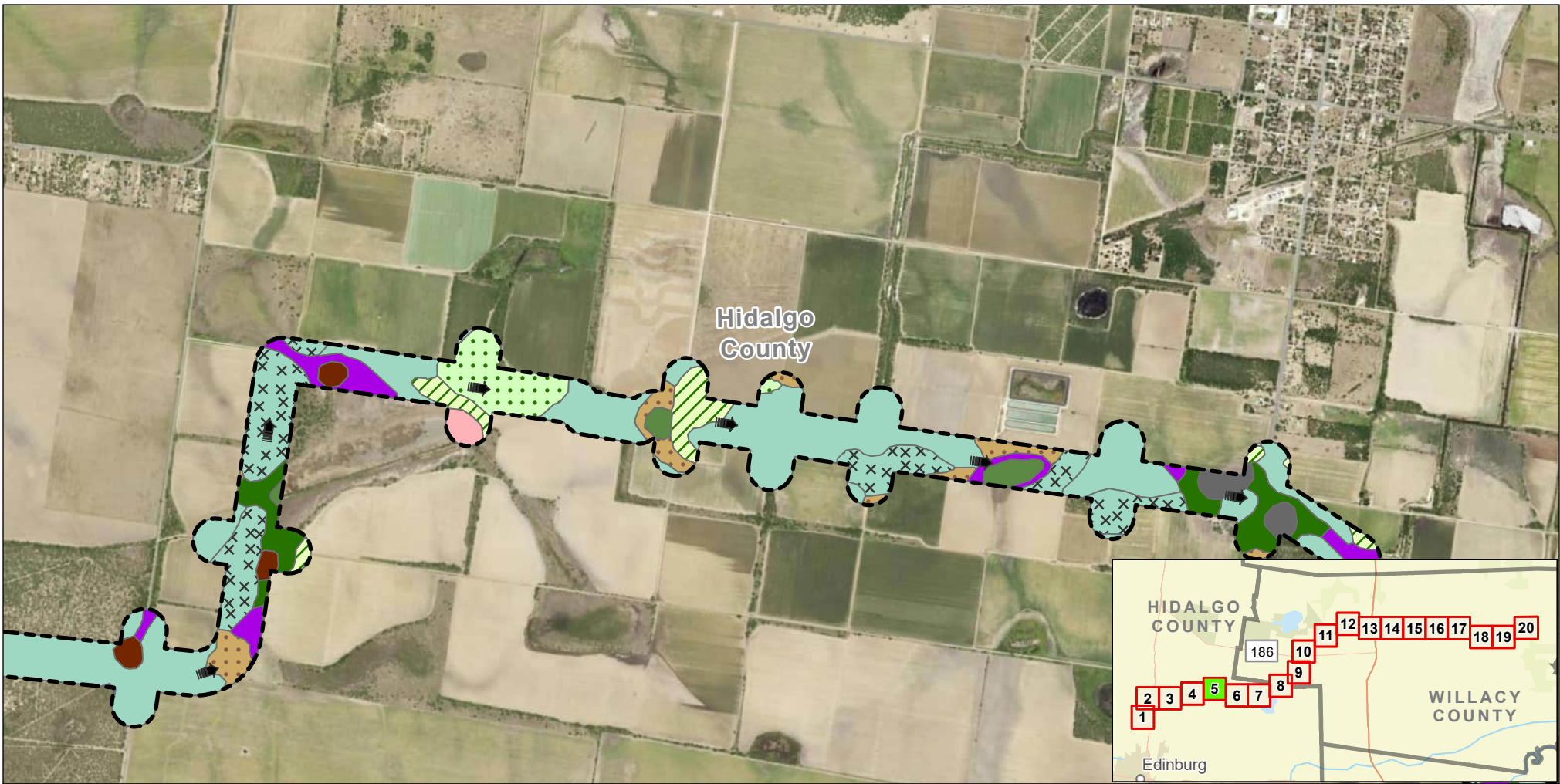
- |  |  |   |   |  |
|--|--|---|---|--|
| Comitas loamy fine sand, 0 to 3 percent slopes       | Hargill fine sandy loam, 1 to 3 percent slopes | Hidalgo fine sandy loam, 0 to 1 percent slopes  | Racombes sandy clay loam, saline, 0 to 1 percent slopes | Tiocano clay, 0 to 1 percent slopes, occasionally ponded |
| Delfina fine sandy loam, warm, 0 to 2 percent slopes | Hebbroville sandy loam, 0 to 1 percent slopes  | Hidalgo fine sandy loam, 1 to 3 percent slopes  | Rio clay loam, ponded                                   | Willacy fine sandy loam, 0 to 1 percent slopes           |
| Hargill fine sandy loam, 0 to 1 percent slopes       | Hebbroville sandy loam, 1 to 3 percent slopes  | Racombes sandy clay loam, 0 to 1 percent slopes | Rio fine sandy loam, saline, ponded                     | Willacy fine sandy loam, 1 to 3 percent slopes           |

- Legend:**
- Study Corridor
  - Drain Flow
  - Proposed Detention Basin



## Exhibit 10 Alternative 2 Soils Map Sheet 4 of 20 Raymondville Drain Project

Author : Joel F. Aguirre      Updated : 10/13/2023  
 DISCLAIMER: RRP Consulting Engineers makes no guarantees as to the accuracy of data used in the construction of this map.

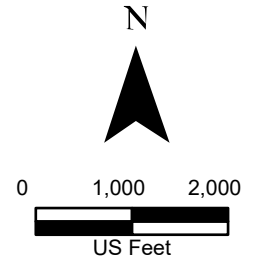


- |  |   |  |  |
|--|---|--|--|
| Delfina fine sandy loam, warm, 0 to 2 percent slopes | Racombes sandy clay loam, 0 to 1 percent slopes         | Rio clay loam, saline, ponded                            | Willacy fine sandy loam, 0 to 1 percent slopes |
| Hargill fine sandy loam, 0 to 1 percent slopes       | Racombes sandy clay loam, saline, 0 to 1 percent slopes | Rio fine sandy loam, saline, ponded                      | Willacy fine sandy loam, 1 to 3 percent slopes |
| Hargill fine sandy loam, 1 to 3 percent slopes       | Rio clay loam, ponded                                   | Tiocono clay, 0 to 1 percent slopes, occasionally ponded |  |

**Legend:**

Study Corridor

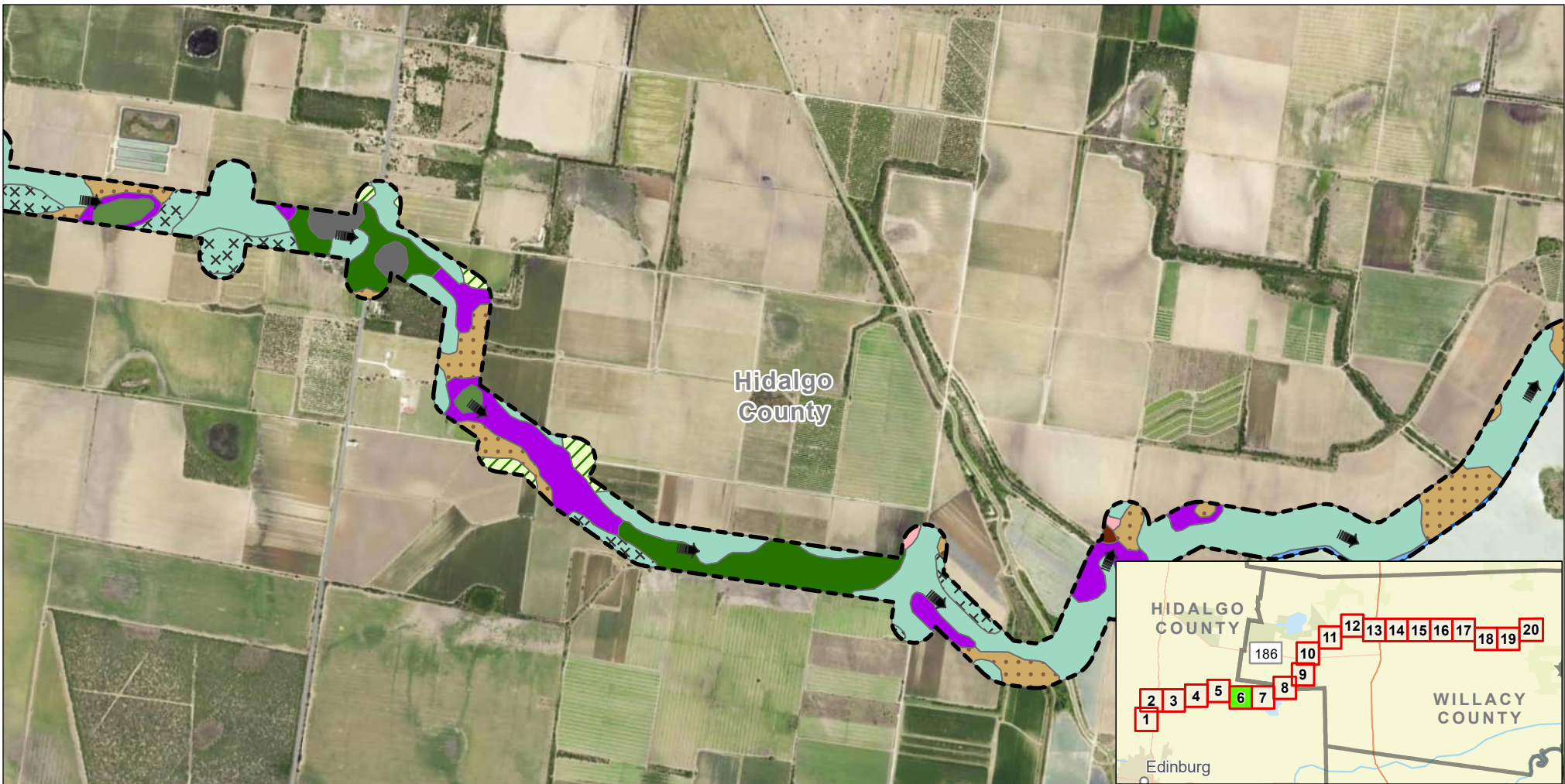
Drain Flow



## Exhibit 10 Alternative 2 Soils Map Sheet 5 of 20 Raymondville Drain Project

Author : Joel F. Aguirre      Updated : 10/13/2023

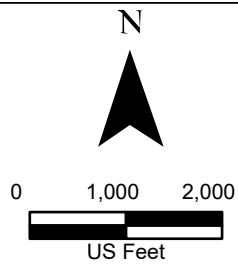
DISCLAIMER: RRP Consulting Engineers makes no guarantees as to the accuracy of data used in the construction of this map.



- |  |  |                                     |  |
|--|--|-------------------------------------|--|
| Delfina fine sandy loam, warm, 0 to 2 percent slopes | Hargill fine sandy loam, 1 to 3 percent slopes           | Rio clay loam, ponded               | Water  |
| Delfina fine sandy loam, warm, 1 to 3 percent slopes | Racombes sandy clay loam, 0 to 1 percent slopes          | Rio clay loam, saline, ponded       | Willacy fine sandy loam, 0 to 1 percent slopes |
| Hargill fine sandy loam, 0 to 1 percent slopes       | Racombes sandy clay loam, saline, 0 to 1 percent slopes  | Rio fine sandy loam, saline, ponded | Willacy fine sandy loam, 1 to 3 percent slopes |
|  | Tiocano clay, 0 to 1 percent slopes, occasionally ponded |                                     |  |

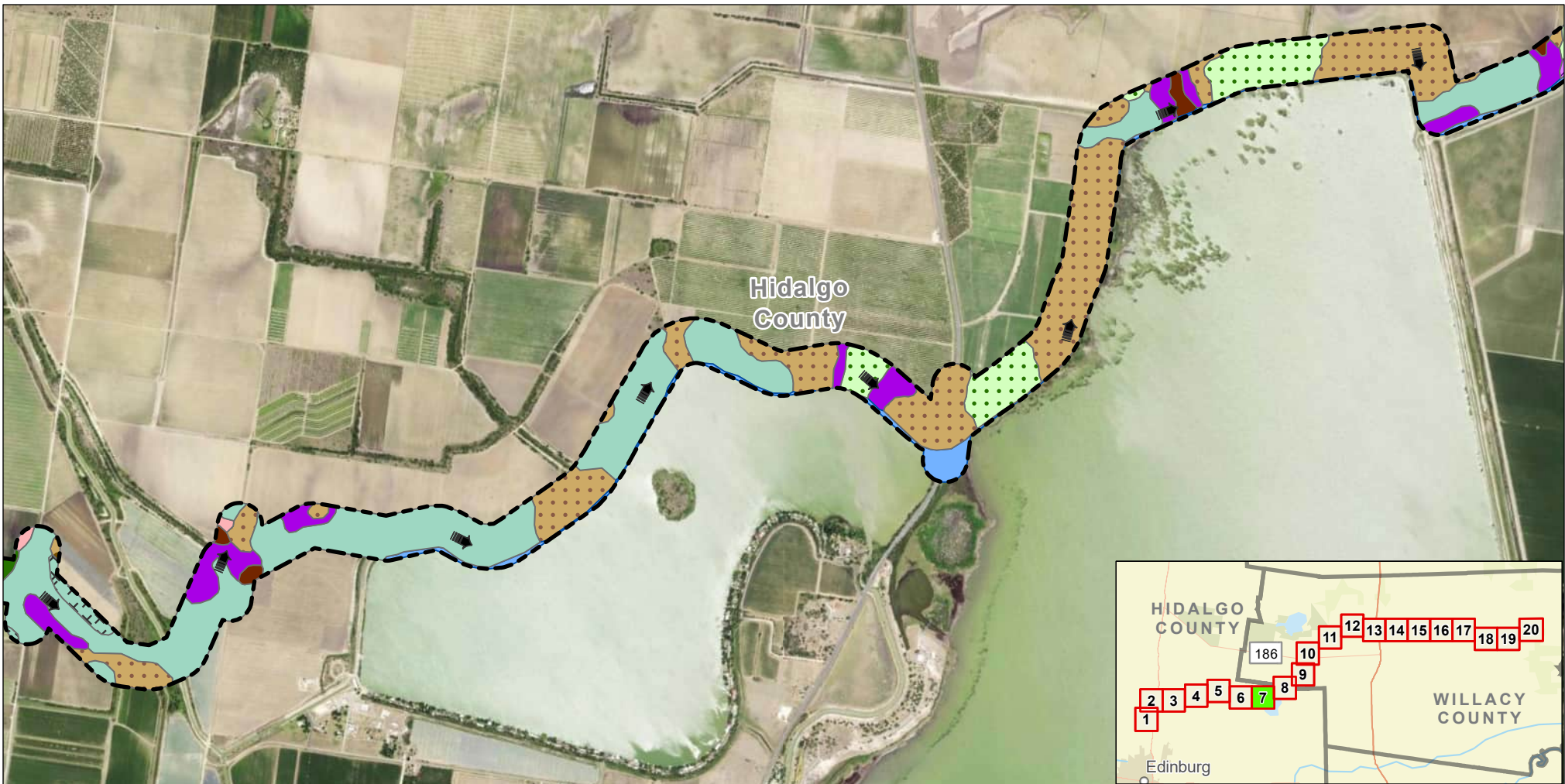
**Legend:**

- Study Corridor
- Drain Flow



## Exhibit 10 Alternative 2 Soils Map Sheet 6 of 20 Raymondville Drain Project

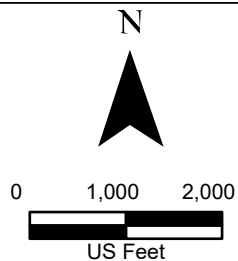
Author : Joel F. Aguirre      Updated : 10/13/2023  
 DISCLAIMER: RRP Consulting Engineers makes no guarantees as to the accuracy of data used in the construction of this map.



- |  |   |                                     |  |
|--|---|-------------------------------------|--|
| Delfina fine sandy loam, warm, 0 to 2 percent slopes | Hidalgo sandy clay loam, 0 to 1 percent slopes          | Rio clay loam, ponded               | Willacy fine sandy loam, 0 to 1 percent slopes |
| Delfina fine sandy loam, warm, 1 to 3 percent slopes | Racombes sandy clay loam, 0 to 1 percent slopes         | Rio fine sandy loam, saline, ponded | Willacy fine sandy loam, 1 to 3 percent slopes |
| Hargill fine sandy loam, 0 to 1 percent slopes       | Racombes sandy clay loam, saline, 0 to 1 percent slopes | Water                               |  |

**Legend:**

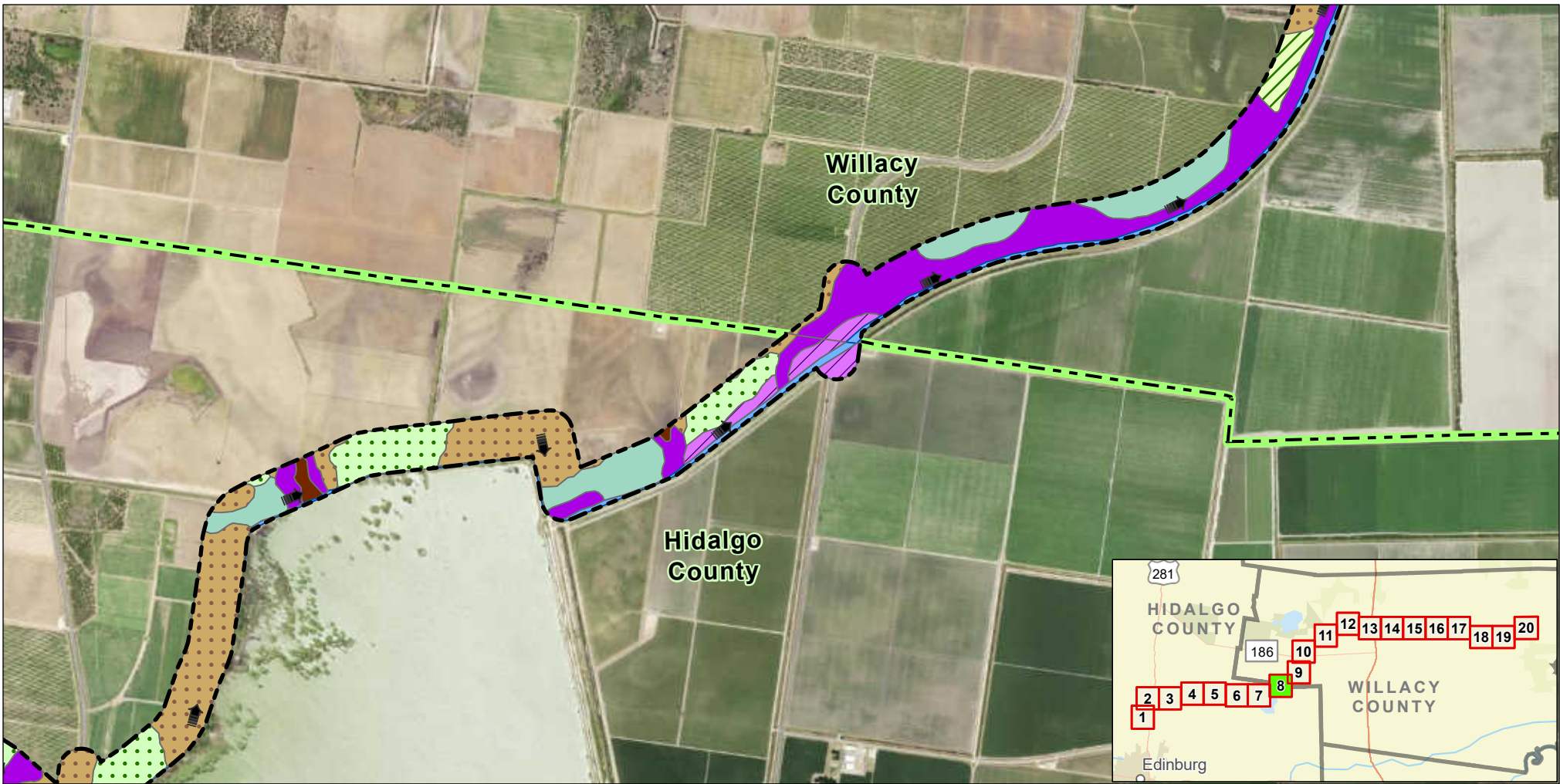
- Study Corridor
- Drain Flow



## Exhibit 10 Alternative 2 Soils Map Sheet 7 of 20 Raymondville Drain Project

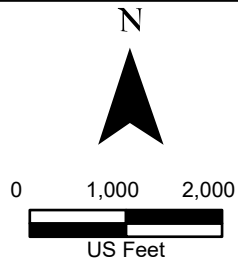
Author : Joel F. Aguirre      Updated : 10/13/2023

DISCLAIMER: RRP Consulting Engineers makes no guarantees as to the accuracy of data used in the construction of this map.



- |  |  |   |  |
|--|--|---|--|
| Delfina fine sandy loam, warm, 0 to 2 percent slopes | Hargill fine sandy loam, 1 to 3 percent slopes | Racombes sandy clay loam, 0 to 1 percent slopes | Willacy fine sandy loam, 0 to 1 percent slopes |
| Hargill fine sandy loam, 0 to 1 percent slopes       | Hidalgo sandy clay loam, 0 to 1 percent slopes | Rio clay loam, ponded                           | Water  |

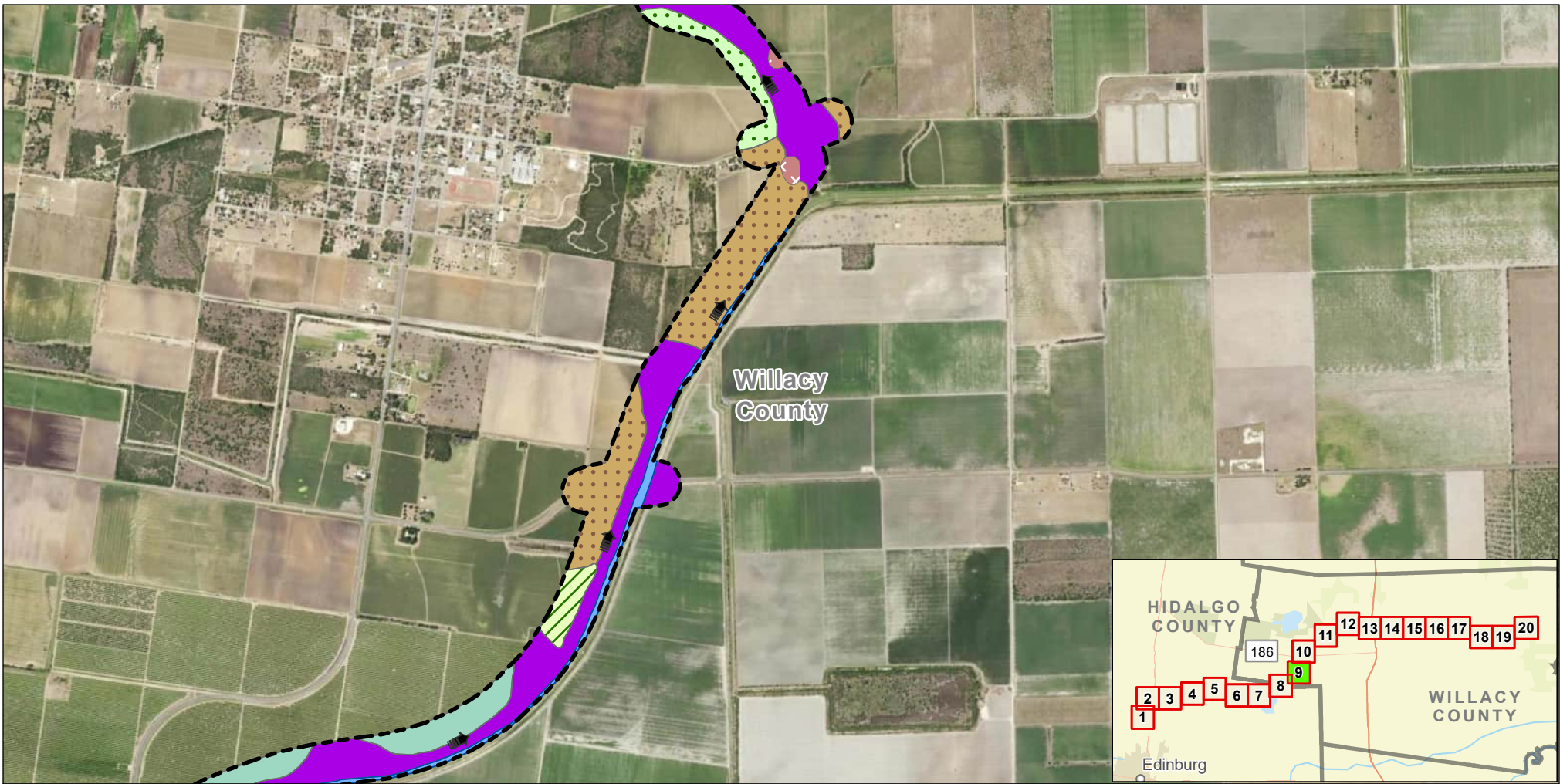
- Legend:**
- Study Corridor
  - Drain Flow
  - County Boundary










## Exhibit 10 Alternative 2 Soils Map Sheet 8 of 20 Raymondville Drain Project



Author : Joel F. Aguirre      Updated : 12/12/2023

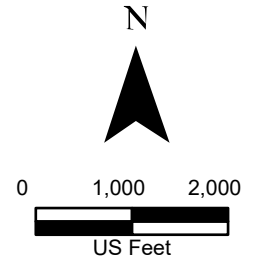
*DISCLAIMER: RRP Consulting Engineers makes no guarantees as to the accuracy of data used in the construction of this map.*



-  Delfina fine sandy loam, warm, 0 to 2 percent slopes
-  Hargill fine sandy loam, 1 to 3 percent slopes
-  Rio sandy clay loam, ponded
-  Hargill fine sandy loam, 0 to 1 percent slopes
-  Racombes sandy clay loam, 0 to 1 percent slopes
-  Water
-  Willacy fine sandy loam, 0 to 1 percent slopes

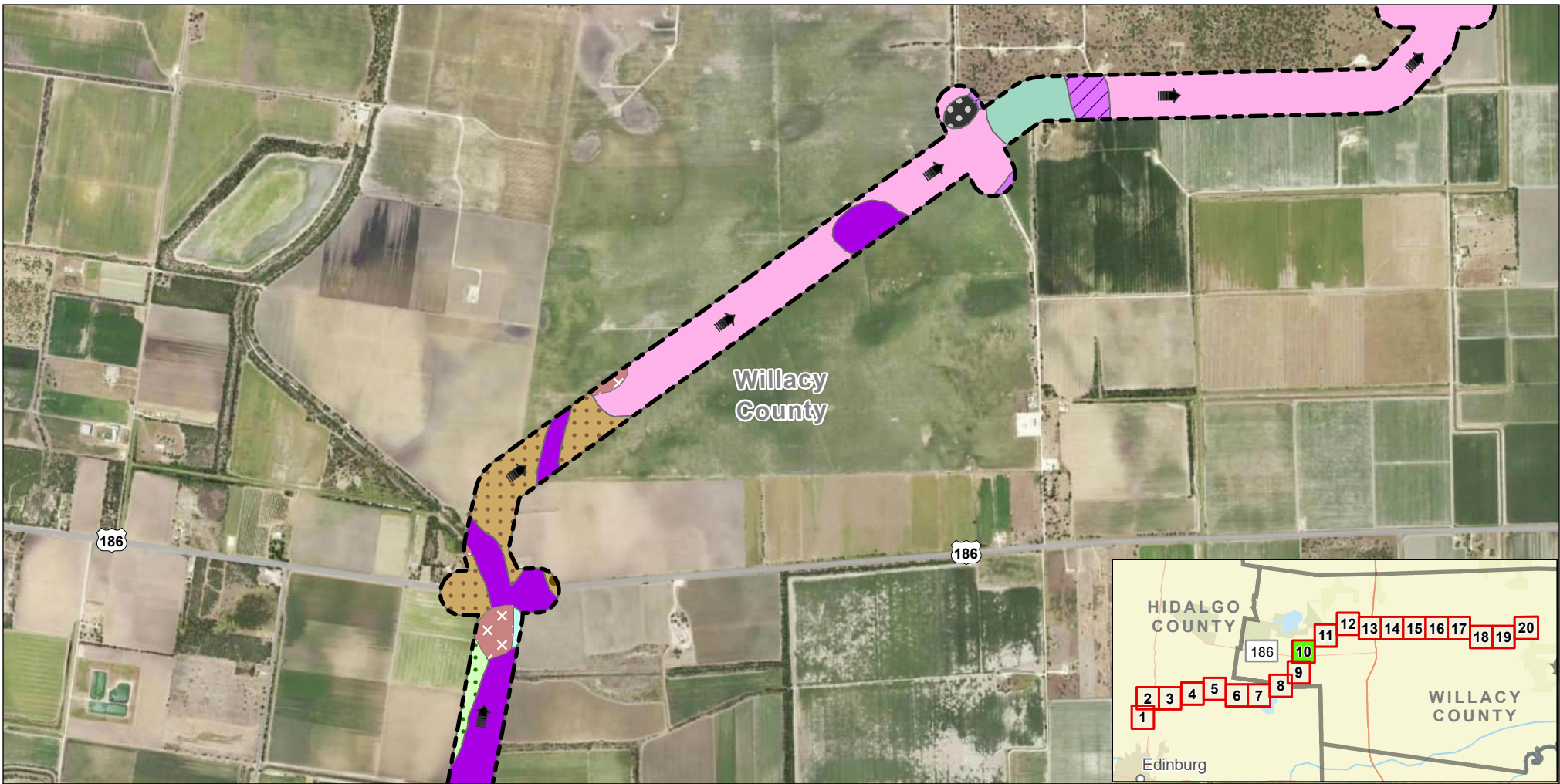
**Legend:**

-  Study Corridor
-  Drain Flow



## Exhibit 10 Alternative 2 Soils Map Sheet 9 of 20 Raymondville Drain Project

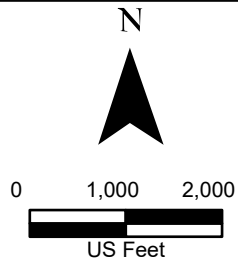
Author : Joel F. Aguirre      Updated : 10/13/2023  
 DISCLAIMER: RRP Consulting Engineers makes no guarantees as to the accuracy of data used in the construction of this map.



- |  |  |   |  |
|--|--|---|--|
| Arents, loamy  | Hargill fine sandy loam, 0 to 1 percent slopes | Racombes sandy clay loam, 0 to 1 percent slopes | Willacy fine sandy loam, 0 to 1 percent slopes |
| Delfina fine sandy loam, warm, 0 to 2 percent slopes | Hidalgo sandy clay loam, 0 to 1 percent slopes | Raymondville clay loam                          |  |
| Delfina fine sandy loam, warm, 1 to 3 percent slopes | Mercedes clay                                  | Rio sandy clay loam, ponded                     |  |

**Legend:**

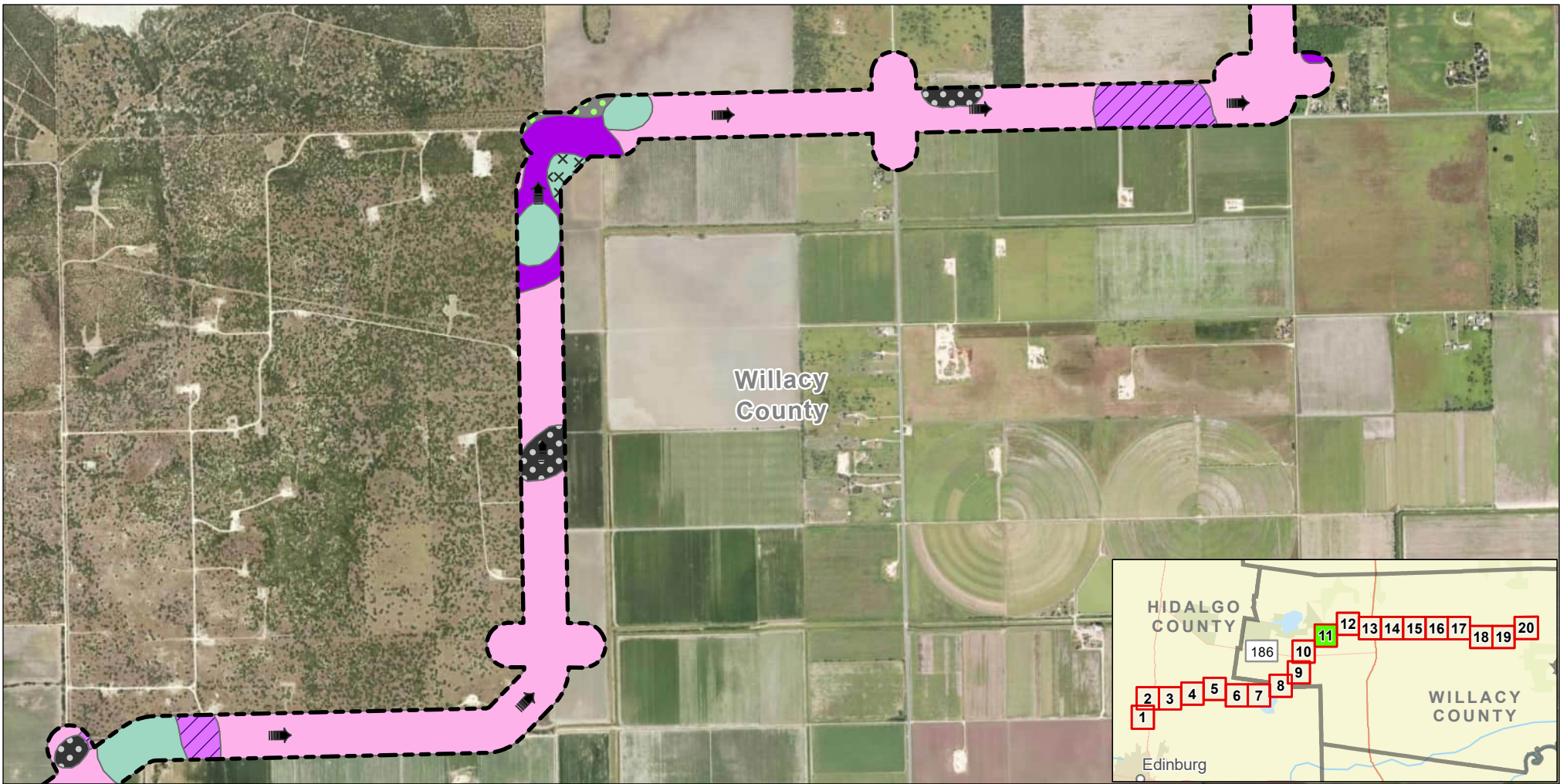
- Study Corridor
- Drain Flow










## Exhibit 10 Alternative 2 Soils Map Sheet 10 of 20 Raymondville Drain Project



Author : Joel F. Aguirre      Updated : 10/13/2023

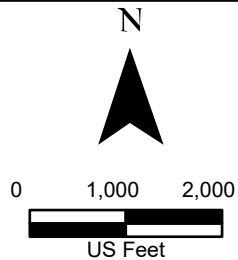
DISCLAIMER: RRP Consulting Engineers makes no guarantees as to the accuracy of data used in the construction of this map.



- |  |   |  |
|--|---|--|
|  Hidalgo sandy clay loam, 0 to 1 percent slopes |  Racombes sandy clay loam, 0 to 1 percent slopes |  Willacy fine sandy loam, 0 to 1 percent slopes |
|  Lyford sandy clay loam                         |  Raymondville clay loam                          |  Willacy fine sandy loam, 1 to 3 percent slopes |
|  Mercedes clay                                  |   |  |

**Legend:**

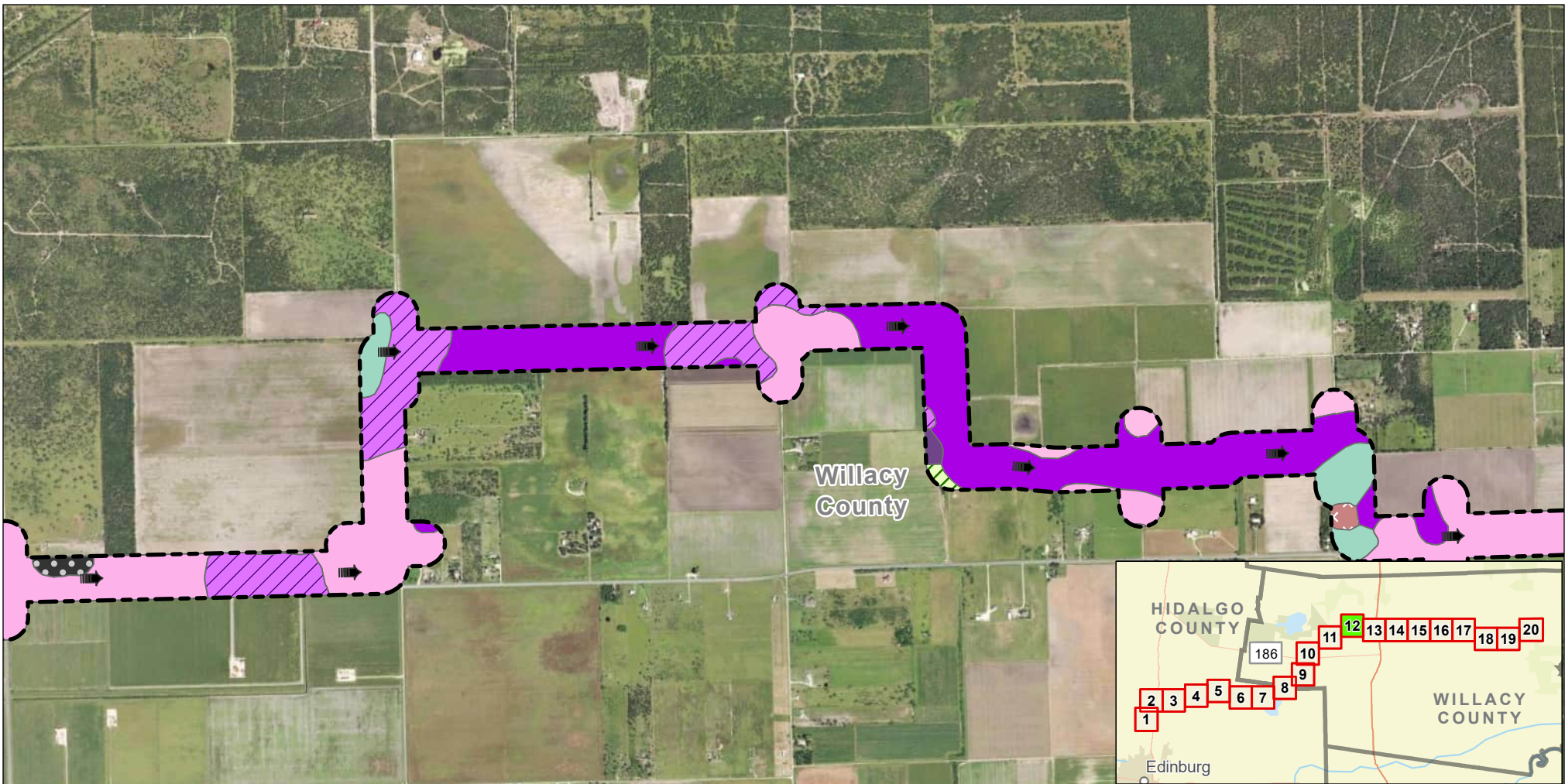
-  Study Corridor
-  Drain Flow



## Exhibit 10 Alternative 2 Soils Map Sheet 11 of 20 Raymondville Drain Project

Author : Joel F. Aguirre      Updated : 10/13/2023

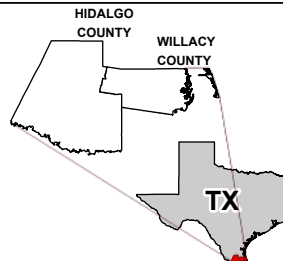
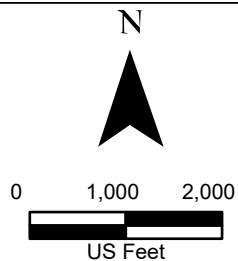
*DISCLAIMER: RRP Consulting Engineers makes no guarantees as to the accuracy of data used in the construction of this map.*



- |  |   |  |
|--|---|--|
| Arents, loamy                                  | Lozano fine sandy loam                          | Rio sandy clay loam, ponded                    |
| Hargill fine sandy loam, 1 to 3 percent slopes | Mercedes clay                                   | Ustorthents, loamy                             |
| Hidalgo sandy clay loam, 0 to 1 percent slopes | Racombes sandy clay loam, 0 to 1 percent slopes | Willacy fine sandy loam, 0 to 1 percent slopes |
|  | Raymondville clay loam                          |  |

**Legend:**

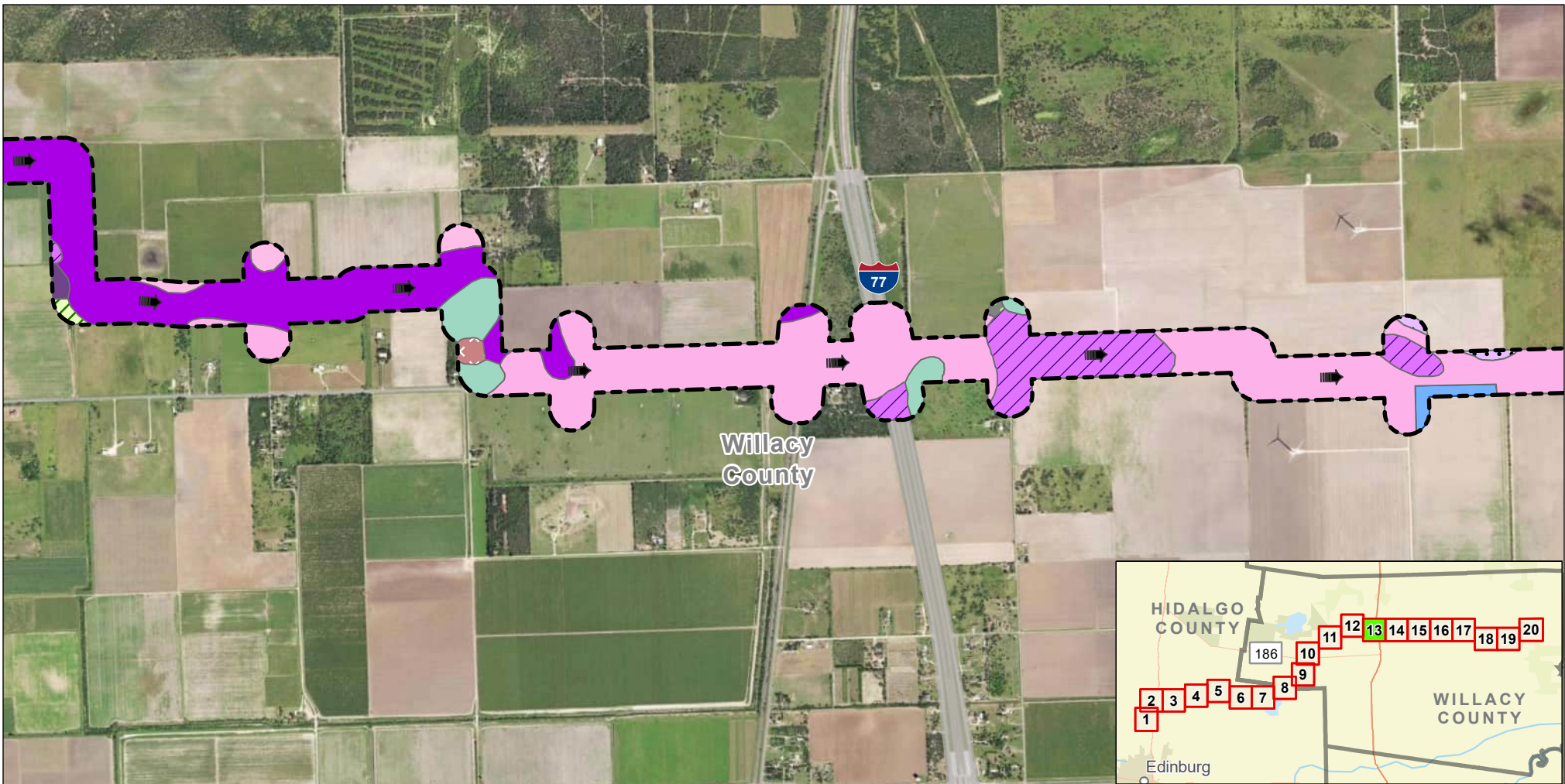
- Study Corridor
- Drain Flow



## Exhibit 10 Alternative 2 Soils Map Sheet 12 of 20 Raymondville Drain Project

Author : Joel F. Aguirre      Updated : 10/13/2023

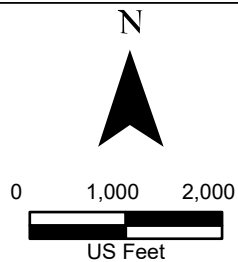
DISCLAIMER: RRP Consulting Engineers makes no guarantees as to the accuracy of data used in the construction of this map.



- |  |   |   |  |
|--|---|---|--|
| Arents, loamy                                  | Lozano fine sandy loam                  | Racombes sandy clay loam, 0 to 1 percent slopes | Ustorthents, loamy                             |
| Hargill fine sandy loam, 1 to 3 percent slopes | Lyford sandy clay loam                  | Raymondville clay loam                          | Water  |
| Hidalgo sandy clay loam, 0 to 1 percent slopes | Nueces fine sand, 0 to 3 percent slopes | Rio sandy clay loam, ponded                     | Willacy fine sandy loam, 0 to 1 percent slopes |

**Legend:**

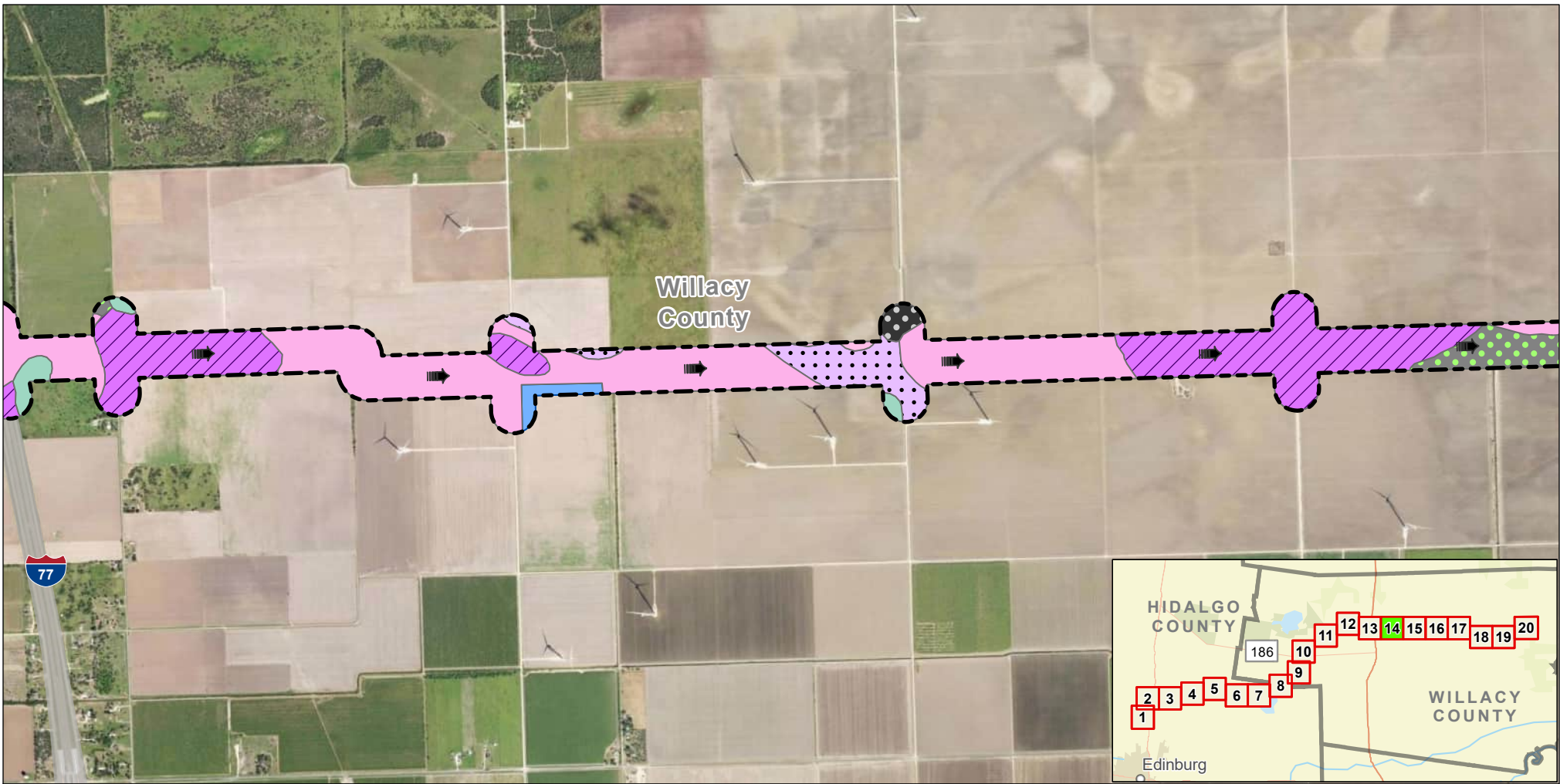
- Study Corridor
- Drain Flow



## Exhibit 10 Alternative 2 Soils Map Sheet 13 of 20 Raymondville Drain Project

Author : Joel F. Aguirre      Updated : 10/13/2023

DISCLAIMER: RRP Consulting Engineers makes no guarantees as to the accuracy of data used in the construction of this map.

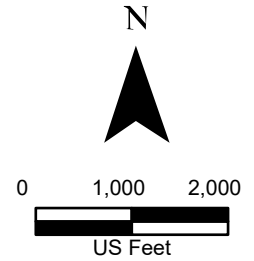


- |  |  |  |   |  |  |
|--|--|--|---|--|--|
|  | Hidalgo sandy clay loam, 0 to 1 percent slopes |  | Mercedes clay                           |  | Water  |
|  | Lozano fine sandy loam                         |  | Nueces fine sand, 0 to 3 percent slopes |  | Willacy fine sandy loam, 0 to 1 percent slopes |
|  | Lyford sandy clay loam                         |  | Raymondville clay loam                  |  |  |

**Legend:**

Study Corridor

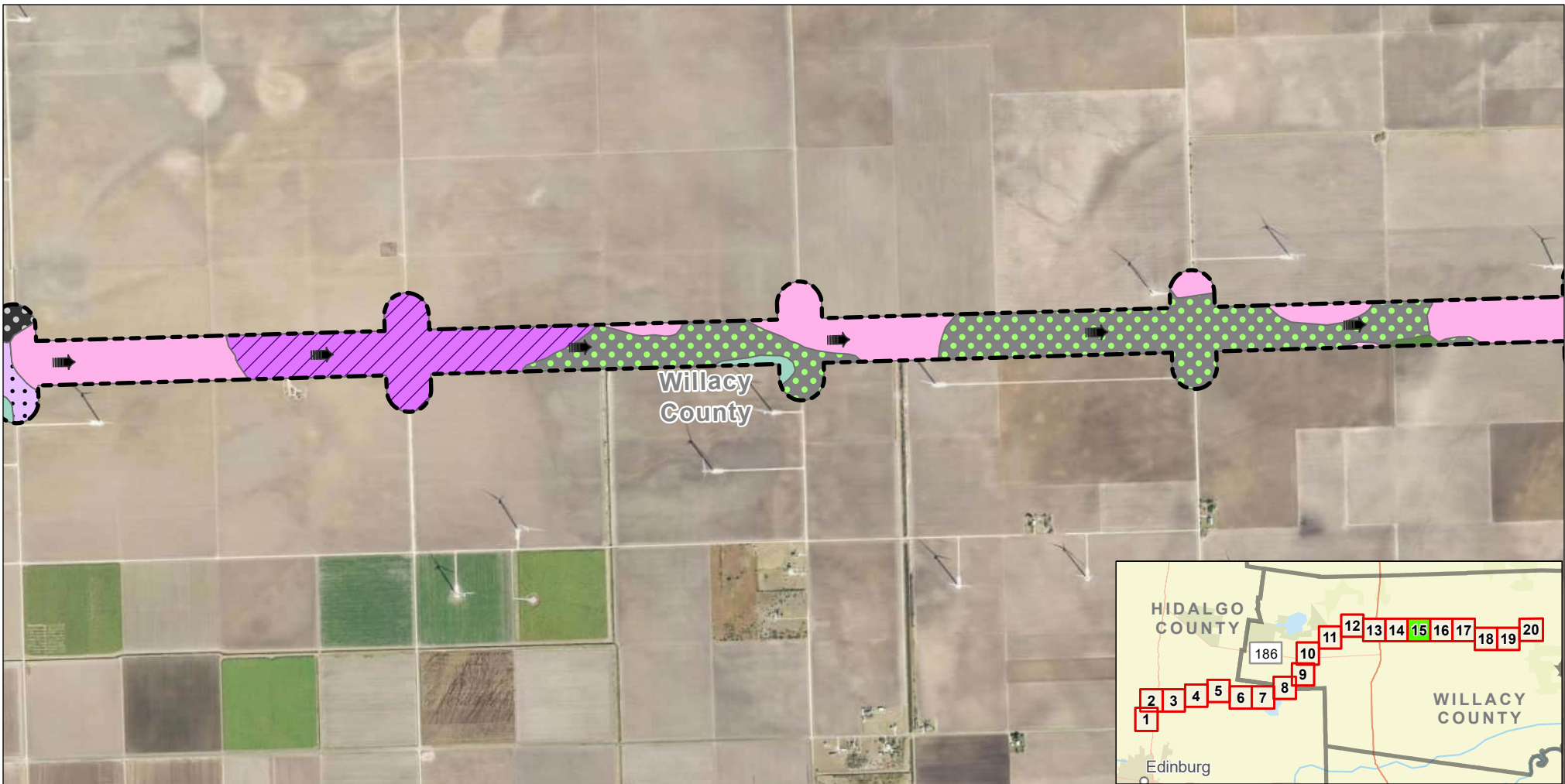
Drain Flow



## Exhibit 10 Alternative 2 Soils Map Sheet 14 of 20 Raymondville Drain Project

Author : Joel F. Aguirre      Updated : 10/13/2023

DISCLAIMER: RRP Consulting Engineers makes no guarantees as to the accuracy of data used in the construction of this map.



- |  |   |  |
|--|---|--|
| Hidalgo sandy clay loam, 0 to 1 percent slopes | Mercedes clay                           | Tiocano clay, 0 to 1 percent slopes, occasionally ponded |
| Lozano fine sandy loam                         | Nueces fine sand, 0 to 3 percent slopes | Willacy fine sandy loam, 0 to 1 percent slopes           |
| Lyford sandy clay loam                         | Raymondville clay loam                  |  |

**Legend:**

Study Corridor

Drain Flow

N

0 1,000 2,000

US Feet

HIDALGO COUNTY WILLACY COUNTY

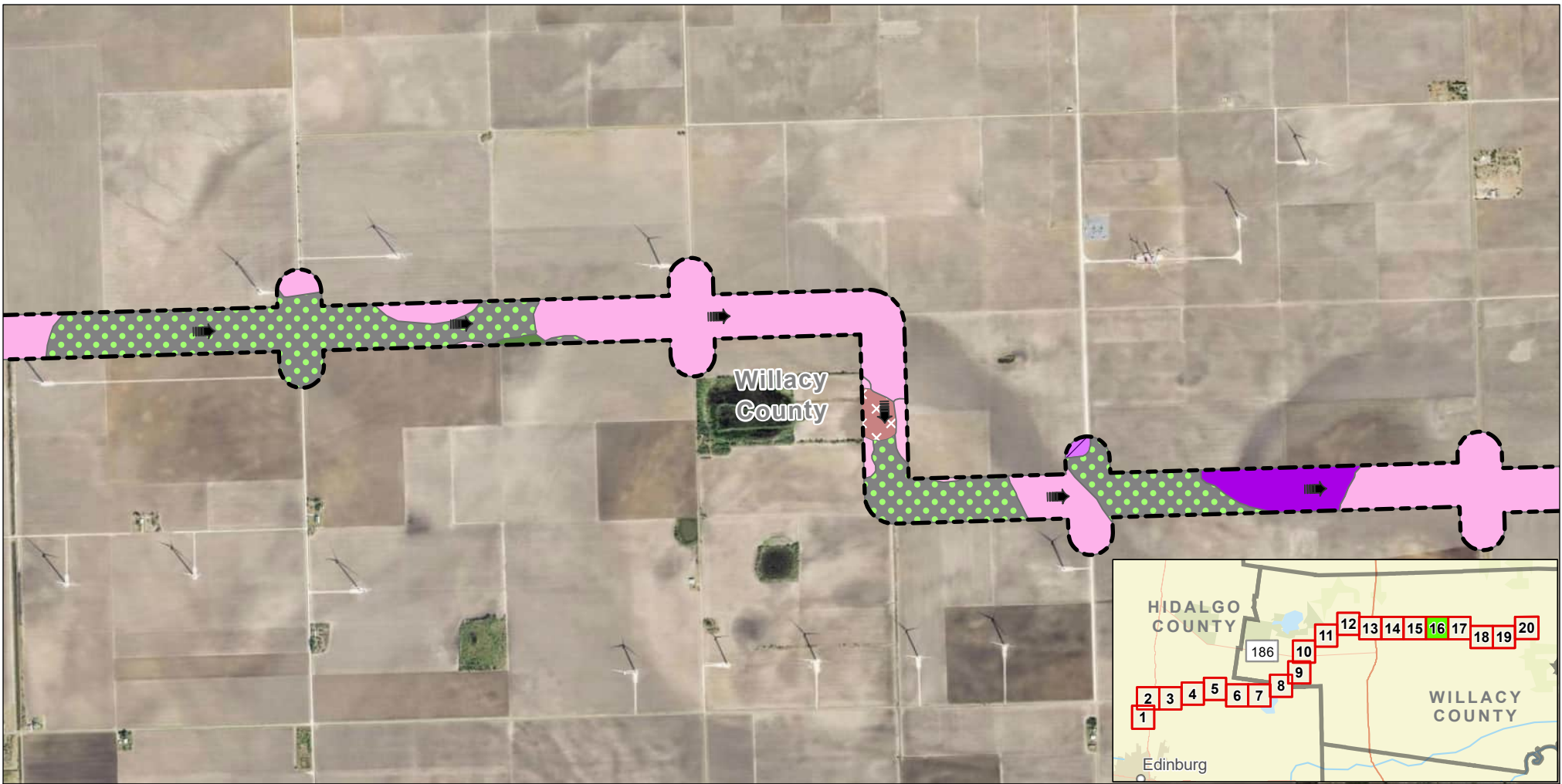
TX








**Exhibit 10  
Alternative 2  
Soils Map  
Sheet 15 of 20  
Raymondville Drain Project**

Author : Joel F. Aguirre Updated : 10/13/2023



DISCLAIMER: RRP Consulting Engineers makes no guarantees as to the accuracy of data used in the construction of this map.

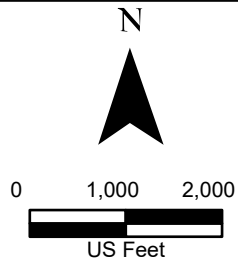
Path: S:\project\4088800\_ProjectRepository\GIS\RPD\_Enr-to-Enr\_Series.aprx



- |  |   |  |
|--|---|--|
|  Hidalgo sandy clay loam, 0 to 1 percent slopes |  Racombes sandy clay loam, 0 to 1 percent slopes |  Tiocano clay, 0 to 1 percent slopes, occasionally ponded |
|  Lozano fine sandy loam                         |  Raymondville clay loam                          |  |
|  Lyford sandy clay loam                         |  Rio sandy clay loam, ponded                     |  |

**Legend:**

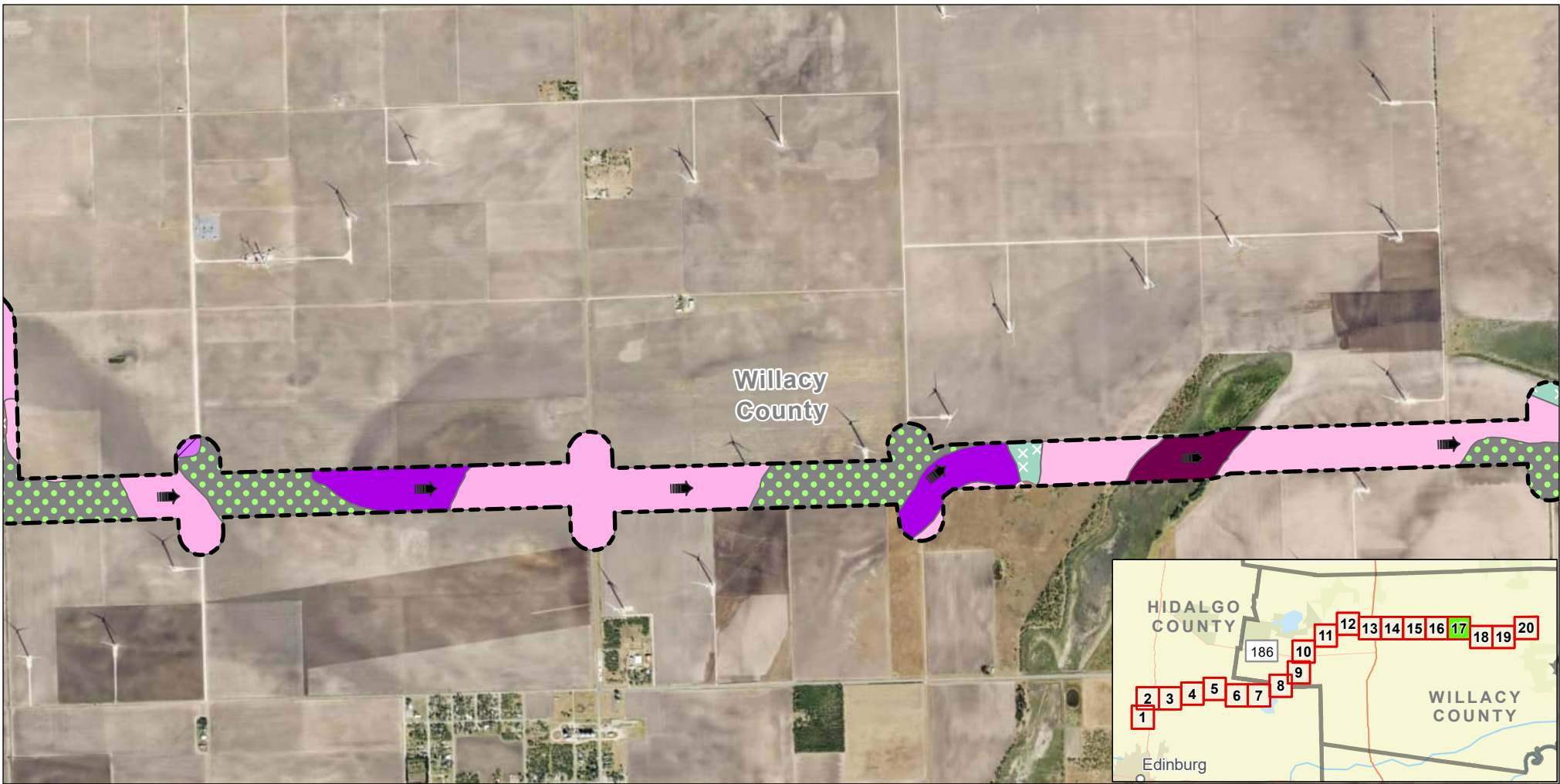
-  Study Corridor
-  Drain Flow



## Exhibit 10 Alternative 2 Soils Map Sheet 16 of 20 Raymondville Drain Project

Author : Joel F. Aguirre      Updated : 10/13/2023

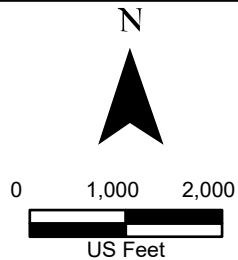
*DISCLAIMER: RRP Consulting Engineers makes no guarantees as to the accuracy of data used in the construction of this map.*



- |  |  |  |   |  |   |
|--|--|--|---|--|---|
|  | Hidalgo sandy clay loam, 0 to 1 percent slopes |  | Racombes sandy clay loam, 0 to 1 percent slopes |  | Willamar fine sandy loam, 0 to 1 percent slopes                                       |
|  | Lozano fine sandy loam                         |  | Raymondville clay loam                          |  | Willamar fine sandy loam, strongly saline, 0 to 1 percent slopes, occasionally ponded |
|  | Lyford sandy clay loam                         |  | Rio sandy clay loam, ponded                     |  |   |

**Legend:**

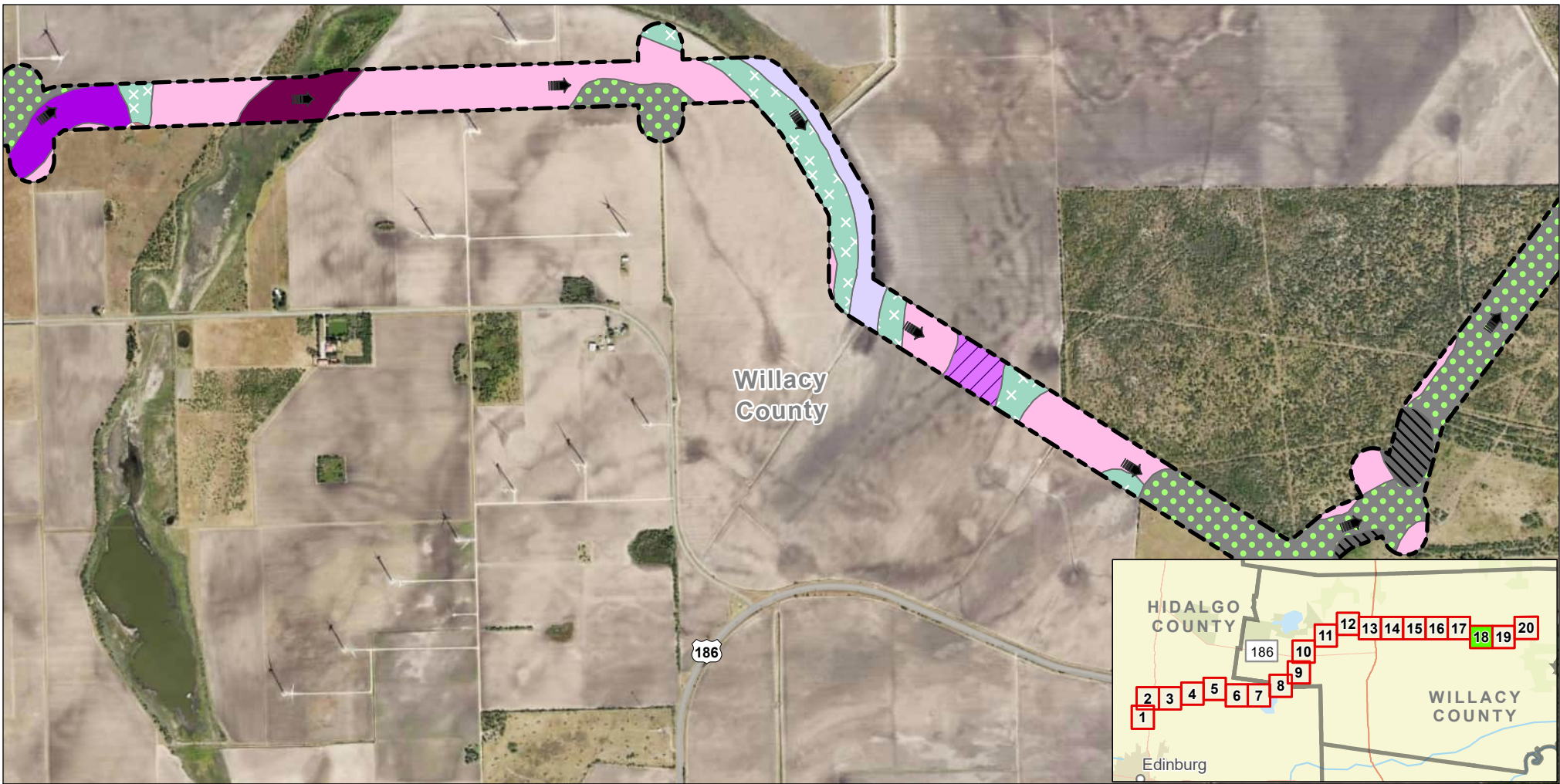
- Study Corridor
- Drain Flow



## Exhibit 10 Alternative 2 Soils Map Sheet 17 of 20 Raymondville Drain Project

Author : Joel F. Aguirre      Updated : 10/13/2023

*DISCLAIMER: RRP Consulting Engineers makes no guarantees as to the accuracy of data used in the construction of this map.*

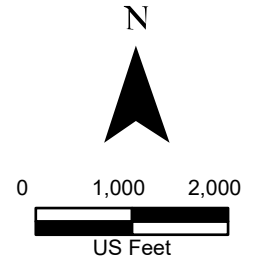


- |   |  |   |   |
|---|--|---|---|
| Hidalgo sandy clay loam, 0 to 1 percent slopes          | Lomalta clay, 0 to 1 percent slopes, occasionally ponded | Racombes sandy clay loam, 0 to 1 percent slopes | Willamar fine sandy loam, 0 to 1 percent slopes                                       |
| Incell clay, 0 to 1 percent slopes, occasionally ponded | Lozano fine sandy loam                                   | Rio sandy clay loam, ponded                     | Willamar fine sandy loam, strongly saline, 0 to 1 percent slopes, occasionally ponded |
| Lyford sandy clay loam                                  |  |   |   |

**Legend:**

Study Corridor

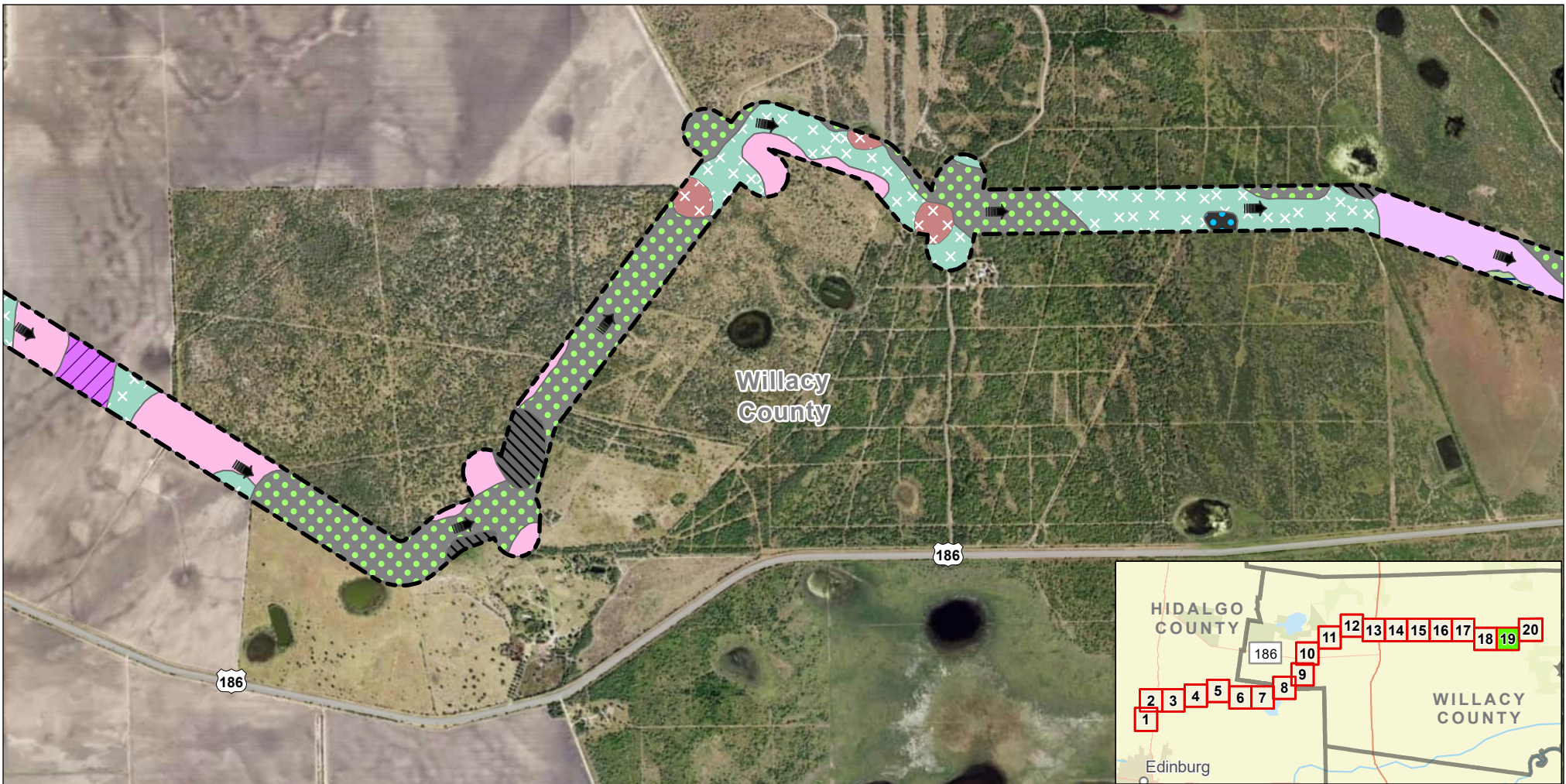
Drain Flow












## Exhibit 10 Alternative 2 Soils Map Sheet 18 of 20 Raymondville Drain Project



Author : Joel F. Aguirre      Updated : 10/13/2023

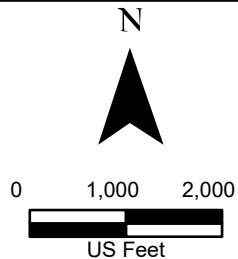
DISCLAIMER: RRP Consulting Engineers makes no guarantees as to the accuracy of data used in the construction of this map.



- |   |  |   |
|---|--|---|
|  Hidalgo sandy clay loam, 0 to 1 percent slopes          |  Latina sandy clay loam, 0 to 1 percent slopes, occasionally ponded, rarely flooded |  Mercedes clay, ponded                           |
|  Incell clay, 0 to 1 percent slopes, occasionally ponded |  Lozano fine sandy loam   |  Rio sandy clay loam, ponded                     |
|  Jarron sandy clay loam                                  |  Lyford sandy clay loam   |  Willamar fine sandy loam, 0 to 1 percent slopes |

**Legend:**

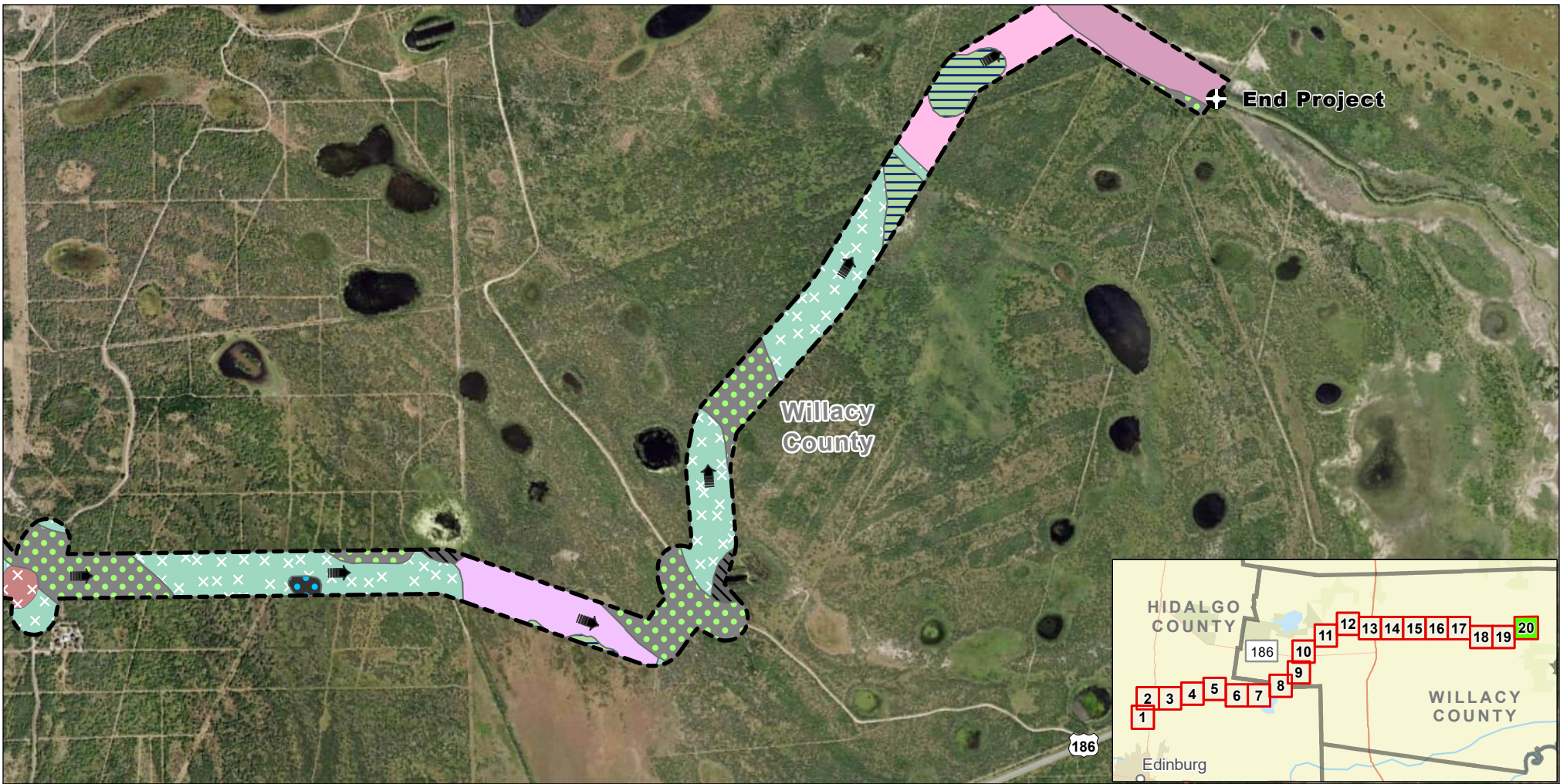
-  Study Corridor
-  Drain Flow



## Exhibit 10 Alternative 2 Soils Map Sheet 19 of 20 Raymondville Drain Project

Author : Joel F. Aguirre      Updated : 10/13/2023

DISCLAIMER: RRP Consulting Engineers makes no guarantees as to the accuracy of data used in the construction of this map.

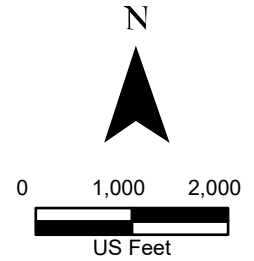


- |   |   |  |   |
|---|---|--|---|
| Arrada sandy clay loam, 0 to 1 percent slopes, very frequently flooded, frequently ponded | Incell clay, 0 to 1 percent slopes, occasionally ponded | Latina sandy clay loam, 0 to 1 percent slopes, occasionally ponded, rarely flooded | Mercedes clay, ponded                           |
| Jarron sandy clay loam  | Lozano fine sandy loam                                  | Rio sandy clay loam, ponded  | Willamar fine sandy loam, 0 to 1 percent slopes |
| Lyford sandy clay loam  |   |  |   |

**Legend:**

Study Corridor

Drain Flow



## Exhibit 10 Alternative 2 Soils Map Sheet 20 of 20 Raymondville Drain Project

Author : Joel F. Aguirre      Updated : 10/13/2023

DISCLAIMER: RRP Consulting Engineers makes no guarantees as to the accuracy of data used in the construction of this map.